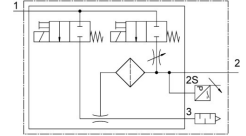
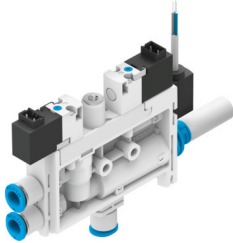


Vacuum generator OVEL-7-H-15-PQ-VQ4-UA-C-A-V1V-H3

Part number: 8049050

FESTO



Data sheet

[General operating condition](#)

Feature	Value
Nominal size, Laval nozzle	0.7 mm
Grid dimension	15 mm
Silencer design	Open
Mounting position	optional
Ejector characteristic	High vacuum Standard
Grade of filtration	40 µm
Manual override	Non-detenting
Integrated function	Electric ejector pulse Flow control Pressure transmitter Electric on-off valve Filter Open silencer
Design	T-shape
Symbol	00995804
Valve function	Closed
Measurement method	Piezoresistive pressure sensor
Operating pressure for max. suction flow rate	0.4 MPa
Operating pressure for max. suction flow rate	4 bar
Operating pressure for max. suction flow rate	58 psi
Operating pressure	0.2 MPa ... 0.7 MPa
Operating pressure	2 bar ... 7 bar
Operating pressure	29 psi ... 101.5 psi
Operating pressure for max. vacuum	0.45 MPa
Operating pressure for max. vacuum	4.5 bar
Operating pressure for max. vacuum	65.25 psi
Max. vacuum	92 %
Nominal operating pressure	0.4 MPa
Nominal operating pressure	4 bar
Nominal operating pressure	58 psi
Max. suction flow rate against atmosphere	17 l/min
Air supply time at nominal operating pressure with ejector pulse	1.2 s
Analogue output	0 - 10 V
Operational voltage range DC	21.6 V ... 26.4 V
Duty cycle	100%
Characteristic coil data	24 V DC: 1.0 W

Feature	Value
Approval	c UL us listed (OL)
KC mark	KC-EMV
CE mark (see declaration of conformity)	To EU EMC Directive
UKCA marking (see declaration of conformity)	To UK instructions for EMC
Operating medium	Compressed air to ISO 8573-1:2010 [7:4:4]
Note on operating and pilot medium	Lubricated operation not possible
Corrosion resistance class CRC	2 - Moderate corrosion stress
LABS (PWIS) conformity	VDMA24364-B1/B2-L
Media temperature	0 °C ... 50 °C
Sound pressure level at nominal operating pressure	61 dB(A)
Degree of protection	IP40
Ambient temperature	0 °C ... 50 °C
Product weight	88 g
Operating voltage range, DC sensor	18 V ... 30 V
Pressure measuring range	-0.1 MPa ... 0 MPa
Pressure measuring range	-1 bar ... 0 bar
Pressure measuring range	-14.5 psi ... 0 psi
Electrical connection input, function	Ejector pulse Vacuum generation
Electrical connection input, connection type	2x plug connector
Electrical connection input, connector system	Connection pattern H
Electrical connection input, number of connections/cores	2
Electrical connection input, connection pattern	00995626
Input electrical connection, mounting type	Snap-locking
Electrical connection output, function	Sensor
Electrical connection output, connection type	Cable
Electrical connection output, connector system	Open end
Electrical connection output, number of connections/cores	3
Cable characteristic	Suitable for energy chains
Cable diameter	2.9 mm
Cable diameter tolerance	± 0.1 mm
Cable length	2.5 m
Nominal cross section conductor	0.14 mm ²
Type of mounting	With through-hole
Pneumatic connection, port 1	For tubing outer diameter of 4 mm
Pneumatic connection, port 3	Open silencer
Vacuum connection	For tubing outside diameter of 4 mm
Cable sheath colour	Grey
Material connecting thread	POM
Note on materials	RoHS-compliant
Material seals	NBR
Material receiver nozzle	POM
Material filter	POM
Material housing	PA-reinforced
Material cable sheath	PVC
Material adjusting screw	Steel
Material silencer	PA-reinforced PE
Material screws	Steel
Material transmitter nozzle	Wrought aluminium alloy