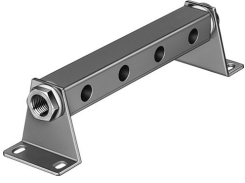


# Common supply manifold PAL-1/8-4

Part number: 8603

FESTO



 [General operating condition](#)

## Data sheet

Feature	Value
Mounting position	optional
Max. number of valve positions	4
LABS (PWIS) conformity	VDMA24364-B1/B2-L
Product weight	190 g
Type of mounting	Via mounting bracket
Pneumatic connection, port 1	G1/4
Note on materials	RoHS-compliant
Material sub-base	Aluminium Anodised