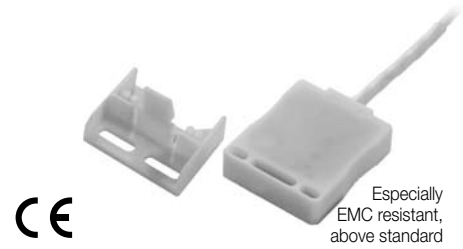


# Level Detection

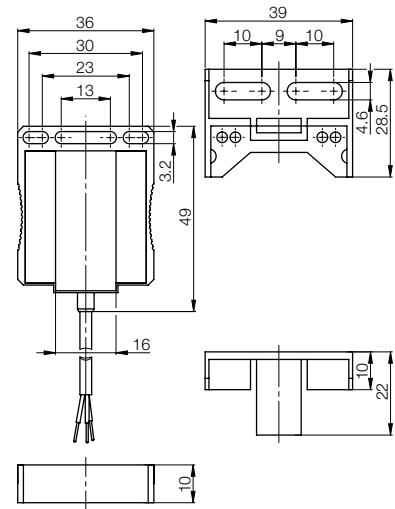
DC 3-wire · Leak sensor  
36×44×10 mm

The new Balluff leak sensor detects even the slightest amounts of liquid quickly and reliably. It thereby prevents costly damage in and around the equipment. The sensor features a chemically resistant housing and a PTFE jacketed cable, so that it can be used even in aggressive surroundings such as in the semiconductor industry without being damaged. The included mounting frame allows the sensor to be screwed directly to the floor. Sensor removal from the frame is also quick and easy. High EMC resistance increases operating reliability even further.



Especially  
EMC resistant,  
above standard

Housing size	<b>36×44×10 mm</b>		
Mounting	flush		
Rated switching distance $s_n$	<b>1.3 mm</b>		
Normally open	PNP/NPN selectable	<b>Ordering code</b>	<b>BCS00H7</b>
		Part number	BCS Z05AA02-GSCFNZ01-DT02
Normally closed	PNP/NPN selectable	<b>Ordering code</b>	<b>BCS00H6</b>
		Part number	BCS Z05AA02-GOCFNZ01-DT02
Supply voltage $U_s$	18...30 V DC		
Voltage drop $U_d$ at $I_o$	≤ 2 V		
Rated insulation voltage $U_i$ (protection class)	75 V DC		
Output current max.	50 mA		
No-load supply current $I_o$ max.	≤ 20 mA		
Reverse polarity/short circuit protected	yes/yes		
Ambient temperature range $T_a$	-10...+70 °C		
Switching frequency $f$	10 Hz		
Output function indicator	LED red		
Degree of protection per IEC 60529	IP 67		
Material	Housing	PP	
	Sensing face	PP	
	Cover	PP	
Wiring	2 m cable PTFE, 3×0.2 mm <sup>2</sup>		



Mounting frame included in scope  
of delivery

