

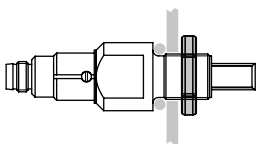
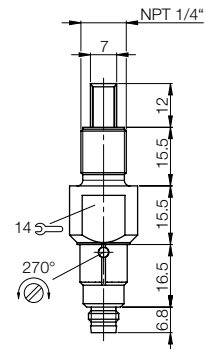
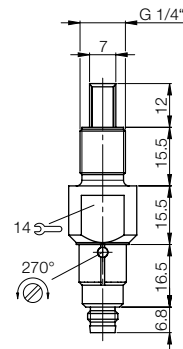
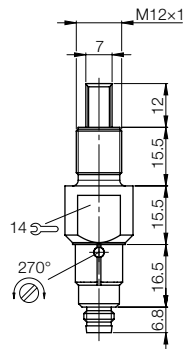
Level Detection

DC 3-wire · Tubular housings
Micro-Level M12, G 1/4", NPT 1/4"

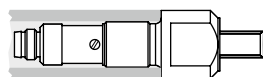


		M12x1 Micro-Level	G 1/4" Micro-Level	NPT 1/4" Micro-Level
Housing size		M12x1 Micro-Level	G 1/4" Micro-Level	NPT 1/4" Micro-Level
Mounting		non-flush	non-flush	non-flush
Rated switching distance s_n		Level adjustable	Level adjustable	Level adjustable
PNP/NPN and NO/NC selectable	Ordering code	BCS009T	BCS009U	BCS009W
	Part number	BCS S41SS01-GPCFNG-S49G	BCS S41SS02-GPCFNG-S49G	BCS S41SS03-GPCFNG-S49G
Supply voltage U_s		10...35 V DC	10...35 V DC	10...35 V DC
Voltage drop U_a at I_a		≤ 3 V	≤ 3 V	≤ 3 V
Rated insulation voltage U_i		75 V DC	75 V DC	75 V DC
Output current max.		50 mA	50 mA	50 mA
No-load supply current I_0 max.		≤ 20 mA	≤ 20 mA	≤ 20 mA
Reverse polarity/short circuit protected		no/yes	no/yes	no/yes
Ambient temperature range T_a		-10...+70 °C	-10...+70 °C	-10...+70 °C
Switching frequency f		5 Hz	5 Hz	5 Hz
Power indicator		LED green	LED green	LED green
Output function indicator		LED yellow	LED yellow	LED yellow
Degree of protection per IEC 60529		IP 67 (Sensing face: IP 68 at max. 10 bar)	IP 67 (Sensing face: IP 68 at max. 10 bar)	IP 67 (Sensing face: IP 68 at max. 10 bar)
Material	Housing	PSU	PSU	PSU
	Sensing face	PSU	PSU	PSU
	Cover	PSU	PSU	PSU
Wiring		M8 connector, 3-pin	M8 connector, 3-pin	M8 connector, 3-pin

Shield (M18 or 1/2") for
Micro-Level sensors
see Accessories section
Page 100



Standard mounting uses through-holes with included nut. This can be ignored when threaded holes are used or serve as additional security. Sealing is accomplished using an O-ring or gasket.



Reverse mounting in a tube of any desired length for fashioning "point-switching" rod sensors. Here also sealing can be accomplished using an O-ring or a gasket.

Level Detection

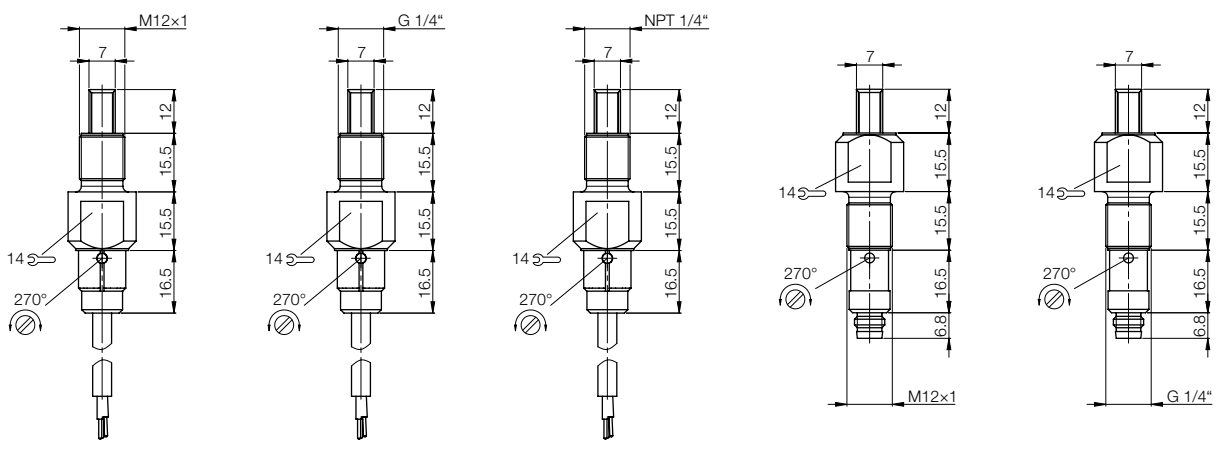
DC 3-wire · Tubular housings
Micro-Level M12, G 1/4", NPT 1/4"



M12x1 Micro-Level non-flush Level adjustable BCS009N	G 1/4" Micro-Level non-flush Level adjustable BCS009P	NPT 1/4" Micro-Level non-flush Level adjustable BCS009R	M12x1 Micro-Level non-flush Level adjustable BCS009Y	G 1/4" Micro-Level non-flush Level adjustable BCS009Z
BCS S40SS01-GPCFNG-EP02	BCS S40SS02-GPCFNG-EP02	BCS S40SS03-GPCFNG-EP02	BCS S42SS01-GPCFNG-S49G	BCS S42SS02-GPCFNG-S49G
10...35 V DC	10...35 V DC	10...35 V DC	10...35 V DC	10...35 V DC
≤ 3 V	≤ 3 V	≤ 3 V	≤ 3 V	≤ 3 V
75 V DC	75 V DC	75 V DC	75 V DC	75 V DC
50 mA	50 mA	50 mA	50 mA	50 mA
≤ 20 mA	≤ 20 mA	≤ 20 mA	≤ 20 mA	≤ 20 mA
no/yes	no/yes	no/yes	no/yes	no/yes
-10...+70 °C	-10...+70 °C	-10...+70 °C	-10...+70 °C	-10...+70 °C
5 Hz	5 Hz	5 Hz	5 Hz	5 Hz
LED green	LED green	LED green	LED green	LED green
LED yellow	LED yellow	LED yellow	LED yellow	LED yellow
IP 67	IP 67	IP 67	IP 64	IP 64
(Sensing face: IP 68 at max. 10 bar)	(Sensing face: IP 68 at max. 10 bar)	(Sensing face: IP 68 at max. 10 bar)	(Sensing face: IP 68 at max. 10 bar)	(Sensing face: IP 68 at max. 10 bar)
PSU	PSU	PSU	PSU	PSU
PSU	PSU	PSU	PSU	PSU
PSU	PSU	PSU	PSU	PSU
2 m cable PUR, 3×0.34 mm ²	2 m cable PUR, 3×0.34 mm ²	2 m cable PUR, 3×0.34 mm ²	M8 connector, 3-pin	M8 connector, 3-pin


DC 3-wire
Tubular housings
SMART^{LEVEL}
technology
High temperature
rated styles
Leak sensor

AC/DC 2-wire
Tubular
housings



Electrical
devices,
connectors and
holders see
Accessories
section starting
page 69



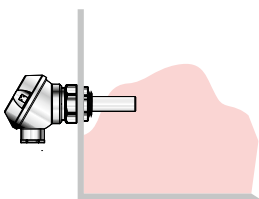
Level Detection

DC 3-wire · Tubular housings
Micro-Level NPT 1/4"
M18



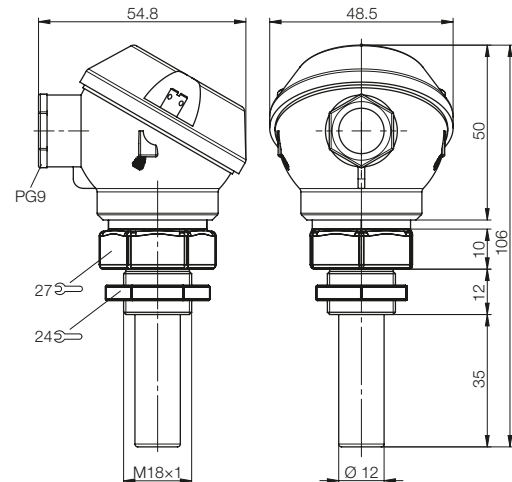
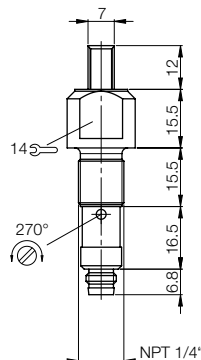
Pressure rated to 10 bar

Housing size		NPT 1/4" Micro-Level	M18x1
Mounting		non-flush	non-flush
Rated switching distance s_n		Level adjustable	Level adjustable
PNP Normally open	Ordering code		BCS006H
	Part number		BCS S01T401-PSCFNG-KM16-T02
PNP Normally closed	Ordering code		BCS006J
	Part number		BCS S01T401-POCFNG-KM16-T02
NPN Normally open	Ordering code		BCS006K
	Part number		BCS S01T401-NSCFNG-KM16-T02
NPN Normally closed	Ordering code		BCS006L
	Part number		BCS S01T401-NOCFNG-KM16-T02
PNP/NPN and NO/NC selectable	Ordering code	BCS00A0	
	Part number	BCS S42SS03-GPCFNG-S49G	
Supply voltage U_s		10...35 V DC	10...35 V DC
Voltage drop U_d at I_o		≤ 3 V	≤ 2.7 V
Rated insulation voltage U_i		75 V DC	75 V DC
Output current max.		50 mA	100 mA
No-load supply current I_o max.		≤ 20 mA	≤ 10 mA
Reverse polarity/short circuit protected		no/yes	yes/yes
Ambient temperature range T_a		-10...+70 °C	-30...+125 °C
Switching frequency f		5 Hz	5 Hz
Power indicator		LED green	
Output function indicator		LED yellow	LED yellow
Degree of protection per IEC 60529		IP 64 (Sensing face: IP 68 at max. 10 bar)	IP 67 (Sensing face: IP 68 at max. 10 bar)
Material	Housing	PSU	Die-case aluminum (GD-Al)
	Sensing face	PSU	PTFE
	Cover	PSU	Die-case aluminum (GD-Al)
Wiring		M8 connector, 3-pin	Screw terminals



Adjustment

Adjustment is made using the trimming potentiometer. The objective is to set a middle value between the turn-on and turn-off point when the sensor is damped. In individual cases when temperature swings are great and very sticky media are used a slight readjustment may be necessary. Otherwise our adjustment instructions for non-flush mount sensor versions apply.



Gasket not included in the scope of delivery